

THE PRESERVATION AND DEVELOPMENT OF AGRICULTURAL LAND ACT, 39 OF 2024

PROTECTED AGRICULTURAL AREAS & AGRICULTURAL AREAS

A. COLLETT
MARCH 2026

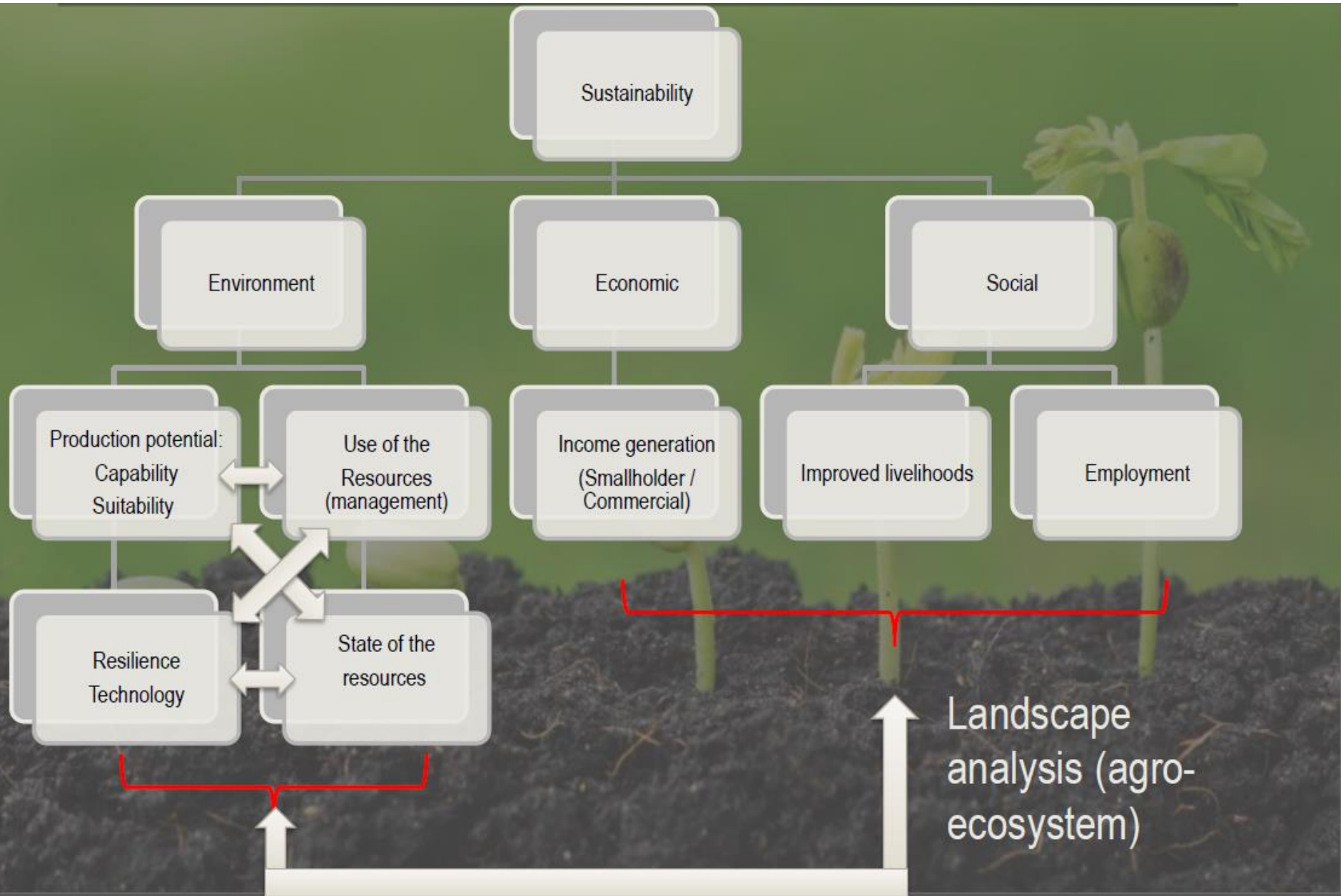


agriculture

Department:
Agriculture
REPUBLIC OF SOUTH AFRICA



PDALA – AGRO-ECOSYSTEM MANAGEMENT

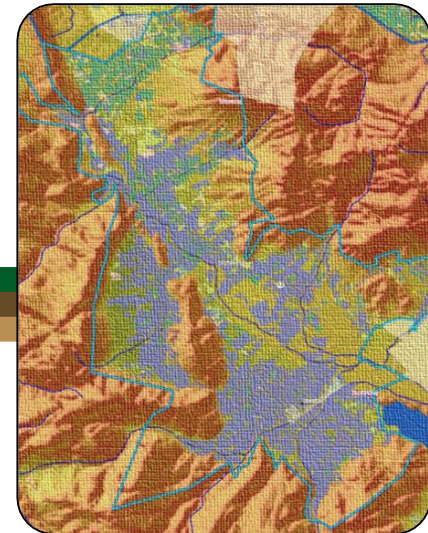


AGRO-ECO SYSTEM DELINEATION - PDALA

<u>AES NO</u>	<u>Agro-Ecosystem Name:</u>	<u>Commodity mix</u>	<u>Production System (Rain-fed / Irrigated)</u>	<u>Agricultural Potential</u>	<u>Farmer type</u>
1	Summer Field Crop agro-ecosystem (Summer rainfall area) incl. Industrial Crops & Extensive Pastures	(Pastures: finger grass; teff; blue / white buffalo grass; weeping love grass; Rhodes grass; fodder sorghum; <i>Pennisetum glaucum</i> ; bottle brush grass; cocksfoot; bread grass) (Field crops: maize; dry beans; soya; ground nuts; sorghum; millet; sunflower) (Industrial crops: cotton; hemp)	R/I	H/M/L	C/S/Li
2	Winter Field Crop agro-ecosystem (Winter Rainfall area)	(Field crops: rye; wheat; barley; oats; triticale; canola)	R/I	H/M/L	C/S/Li
3	Summer / Winter Field Crop agro-ecosystem (Summer Rainfall area)	(Summer Field crops: maize; dry beans; soya; ground nuts; sorghum; millet; sunflower) alternate with (Winter Field crops: rye; wheat; barley; oats)	R/I	H/M/L	C/S/Li
4	Indigenous Shrubs & Bush crops agro-ecosystem	(Rooibos; Honeybush)	R	N/a	C/S/Li
5	Sugar crops agro-ecosystem	Sugarcane, sugarbeet	R/I	H/M/L	C/S/Li
6	Vegetable crops agro-ecosystem	(Vegetables, melons, herbs, spices, strawberries, medicinal & essential oils & chicory)	I	H/M	C/S/Li
7	Tropical and subtropical crops agro-ecosystem	(All tropical & subtropical crops & including macadamia nuts; tea, coffee)	I	H/M	C/S/Li
8	Citrus agro-ecosystem	All citrus commodities (oranges; lemons; naartjies; grapefruit; limes; tangerines; mineolas)	I	H/M	C/S/Li
9	Intensive pastures agro- ecosystem (for Dairy & Small pen production)	(Pastures: <i>Pennisetum clandestinum</i> (kikuyu); <i>Lolium multiflorum</i> (ryegrass - annual); <i>Lolium perenne</i> (ryegrass - perennial); <i>Schedonorus arundinaceus</i> (tall Fescue); <i>Medicago sativa</i> (Lucerne); <i>Trifolium pratense</i> (Red clover); <i>Trifolium repens</i> (White clover); <i>Vicia spp</i> (Wieke / Vetch); <i>Ornithopus sativus</i> (Seradella / birds foot))	I	H/M	C/S/Li
10	Stone & Pome fruits & Berries agro-ecosystem	(All stone and pome fruits (including olives & pecan nuts) and berries (excluding strawberries)	I	H/M	C/S/Li
11	Viticulture agro-ecosystem	(Grapes (for table, wine & raisins)	I	H/M	C/S/Li
12	Extensive Natural Rangeland agro-ecosystem	(for Livestock - large; small / Game)	R	N/A (grazing capacity)	C/S/Li
13	Forestry agro-ecosystem	Wattle; Gums; Pines	R	H/M/L	C/S/Li

PROTECTED AGRICULTURAL AREAS

- The “Protected Agricultural Areas” is defined as a:
“cartographic *delineated area of agricultural land, preserved for purposes of ensuring high value agricultural land is protected against non- agricultural land uses in order to promote long-term agricultural production and food security*”.
- PAAs is regarded as **strategic priority agricultural areas**, identified on a 1:50 000 scale, which contains significant clusters of *significantly higher than above average potential agricultural land*
 - Capability, suitability & potential for agricultural production
- Agricultural land uses are recognised as the priority land use
- Proven highly productive agricultural areas / possible “new” expansion areas



agriculture

Department:
Agriculture
REPUBLIC OF SOUTH AFRICA

PROTECTED AGRICULTURAL AREAS: PURPOSE

Ensure national food security (National PAAs)

- Agricultural land with a very high production potential is a valuable, non-renewable resource
 - Maximize agricultural productivity
 - Minimise land alienation, conflicting land uses, “nuisance complaints”
 - Minimize negative impact on the environment
 - Optimal land use efficiency



Economic growth (Provincial PAAs)

- Important local agricultural industry contributor
 - Production - Processing - Supply (accessibility / availability)
- Job creation / Income generation / Agricultural Infrastructure development



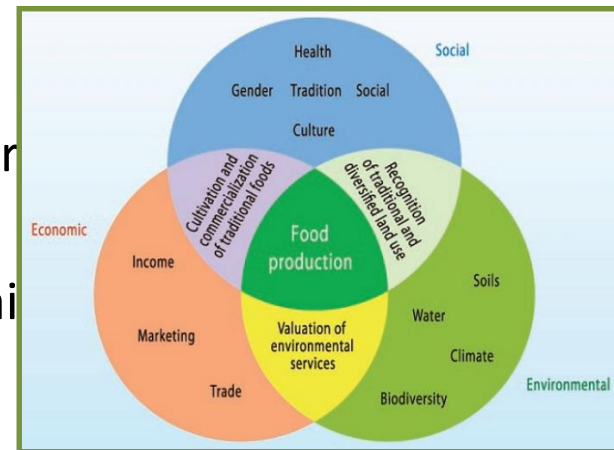
agriculture

Department:
Agriculture
REPUBLIC OF SOUTH AFRICA



PROTECTED AGRICULTURAL AREAS: APPROACH

“**agricultural potential**” means a *measure of potential productivity per unit area and unit time achieved with specified management inputs which, for a given crop or veld type and level of management, and is largely determined by the interaction of climate, soil and terrain*



EVALUATION FACTORS

➤ Land capability

- Land capability evaluation classes 11 – 15
- Land capability evaluation classes 9 – 10 (8) (6 – 8 irrigation)
- *Land capability evaluation classes < 8*

➤ Crop suitability

- Crop Type > 6 – 12 / < 6
- Land use / cover
 - Crop type (dominant / homogeneous areas)
 - Production type (Irrigation / Rainfed); Plantations

Land capability evaluation value : 2016	Area - ha
Very low : 1	1 014 421.11
2	3 567 903.24
3	6 138 643.35
4	13 058 795.57
5	29 553 848.15
6	24 315 742.48
7	17 859 853.83
8	14 851 423.04
9	8 082 749.85
10	2 888 575.50
11	521 919.90
12	72 781.01
13	16 991.21
14	9 902.47
Very High : 15	4 013.33



agriculture

Department:
Agriculture
REPUBLIC OF SOUTH AFRICA

GRAZING PAA's – DELINEATION APPROACH

IN



- Long-term Grazing Capacity
- Vegetation Type
- Long-term Rainfall
- Land Cover
- Top Clay percentage
- Slope percentage



OUT



- Permanently transformed
 - Built-up
 - Cultivation
 - Mining
 - Plantations
 - Forests
- Municipal areas prior 1994
- Environmental Protected Areas



agriculture

Department:
Agriculture
REPUBLIC OF SOUTH AFRICA

PROTECTED AGRICULTURAL AREAS: APPROACH

Excluded Areas (defined)

- Permanently transformed areas
 - Built up (residential; industrial; commercial)
 - Mining
 - Waterbodies
- Formally proclaimed Environmental Protected Areas

Boundary Alignments

- Cadastre (parent farms / portions)
- Rivers / Roads / Any other visible man-made feature

Agro-ecosystem (holistic approach)

- Dominant: Homogeneous capability / suitability / potential / land use
- Larger “non-fragmented” primary agricultural land use
- Acknowledged existing non – agricultural land uses within PAA (excluded areas)
- Cohesion: Agro-Biodiversity
- Fine scale planning on local level



agriculture

Department:
Agriculture
REPUBLIC OF SOUTH AFRICA



PROTECTED AGRICULTURAL AREAS (PAAs) (CULTIVATION) IN SOUTH AFRICA

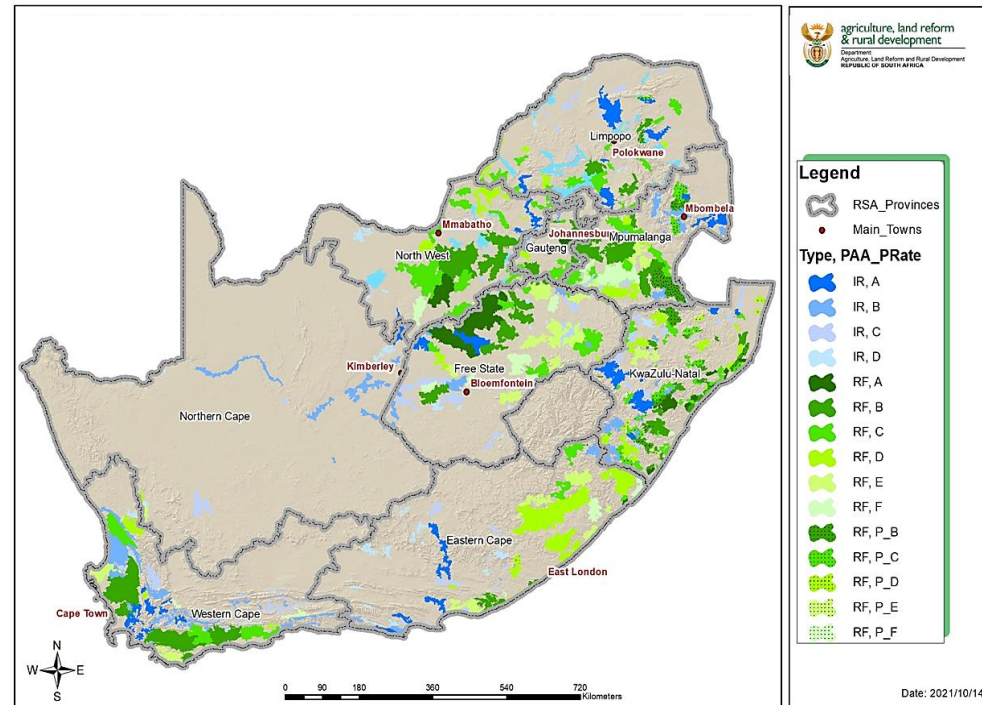
PAA TYPES

- Rainfed (A – F)
- Irrigation (A – D)

Grazing (A – D)

Priority Rating:	Area (Ha)	% of country
A	3 332 388.58	2.73%
B	8 461 212.60	6.94%
C	5 777 765.33	4.74%
D	3 237 461.24	2.65%
E	1 769 932.29	1.45%
F	1 159 893.86	0.95%
Remainder		80.54%
Total	23 738 653.77	19.46%

Type	Area (Ha)	% of country
Rainfed	16 353 523.060	13.41%
Irrigation	7 385 130.71	6.05%
Total	23 738 653.77	19.46%



Protected Agricultural Areas as % of country

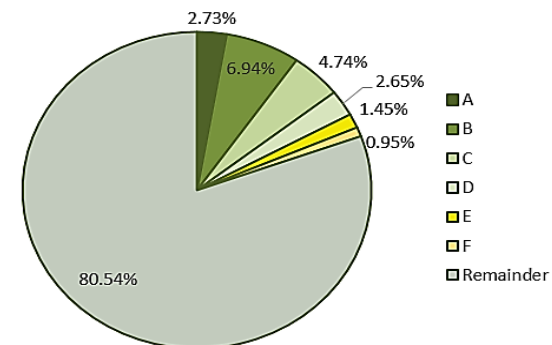


Table: Representation of the areas demarcated under Cultivation (Rainfed & Irrigation) PAAs

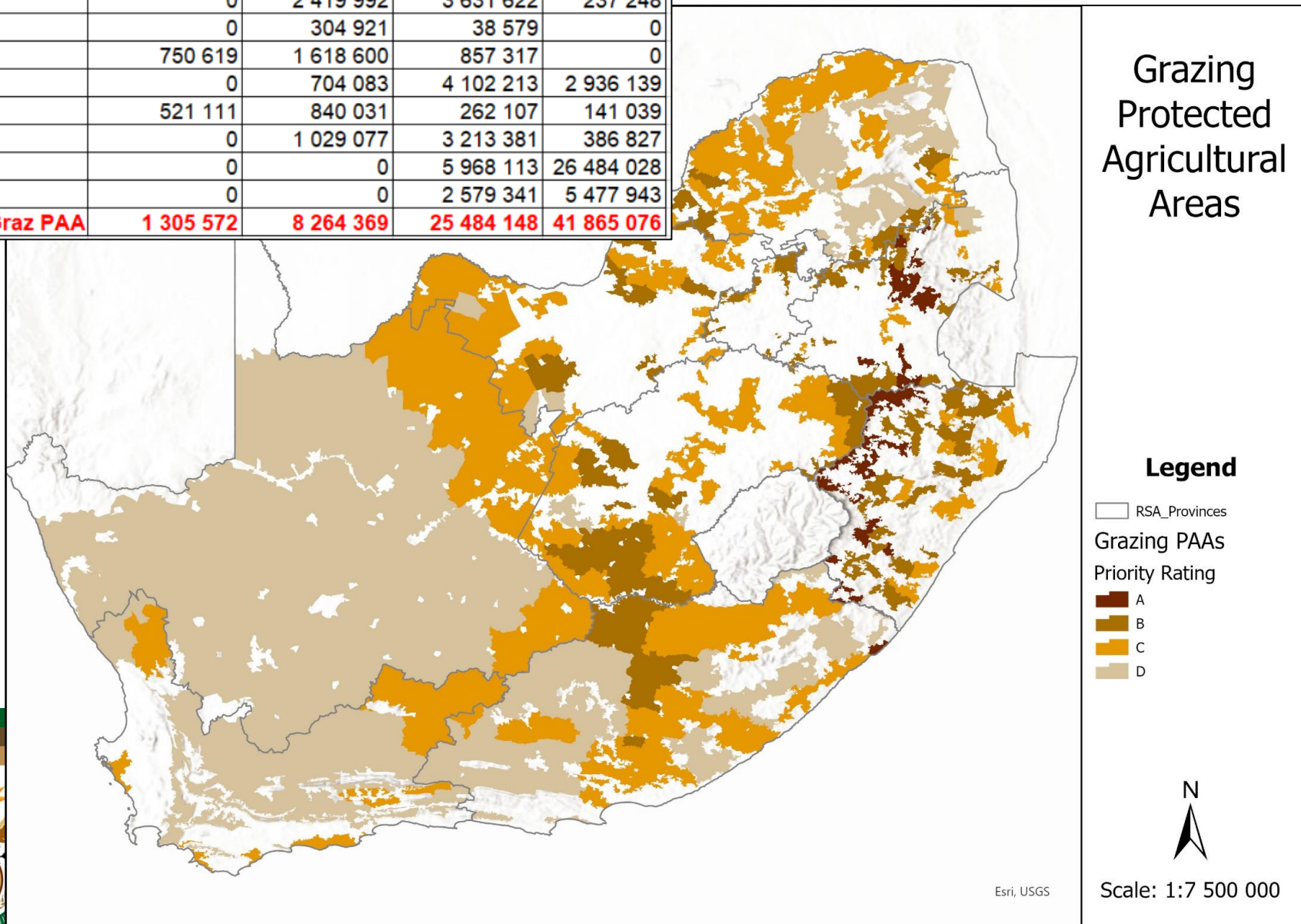


agriculture

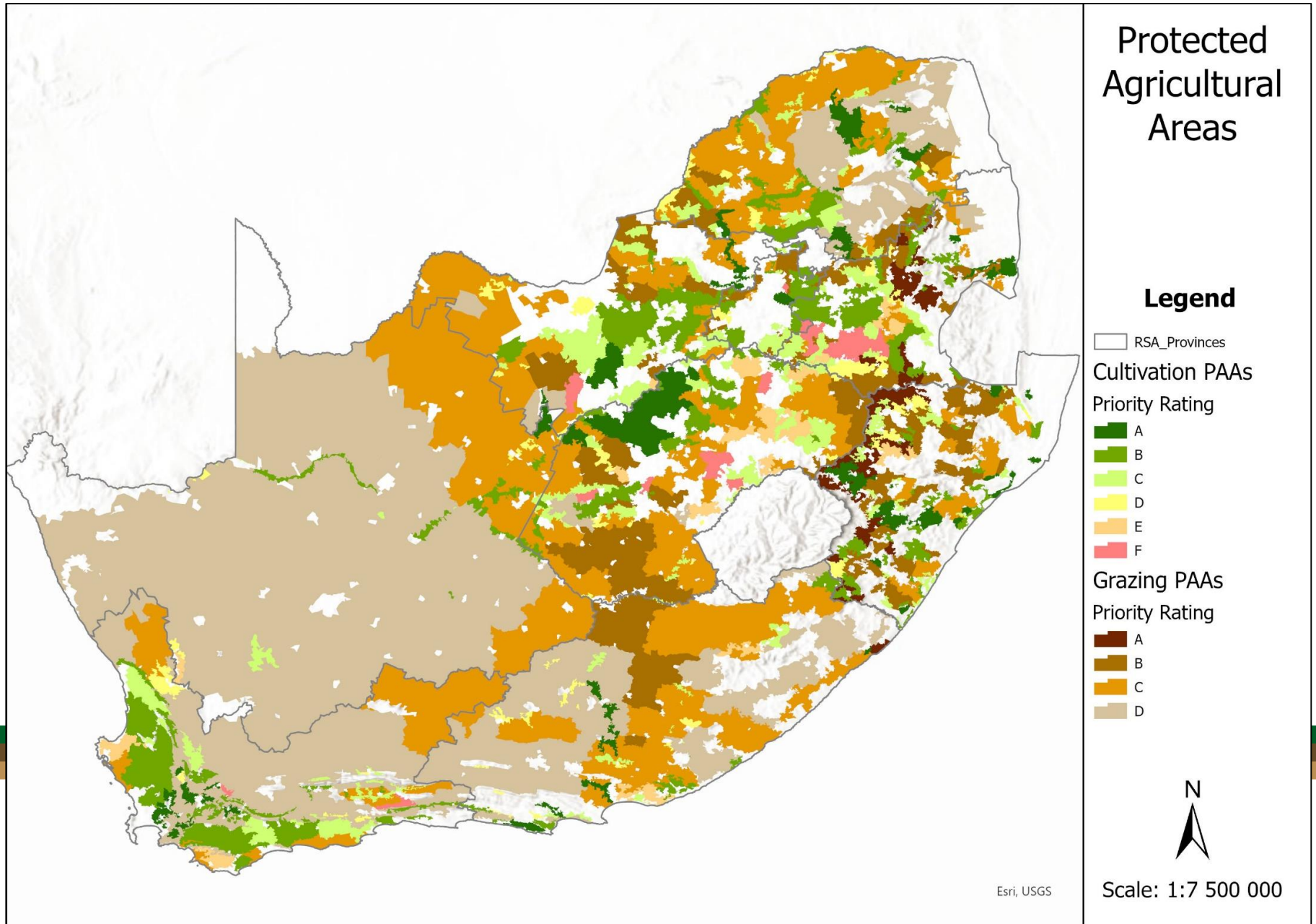
Department:
Agriculture
REPUBLIC OF SOUTH AFRICA

PROTECTED AGRICULTURAL AREAS (GRAZING) IN SOUTH AFRICA

Province	A	B	C	D
EC	33 841	1 347 665	4 831 477	6 201 852
FS	0	2 419 992	3 631 622	237 248
GP	0	304 921	38 579	0
KZN	750 619	1 618 600	857 317	0
LP	0	704 083	4 102 213	2 936 139
MP	521 111	840 031	262 107	141 039
NW	0	1 029 077	3 213 381	386 827
NC	0	0	5 968 113	26 484 028
WC	0	0	2 579 341	5 477 943
TOTAL ha Graz PAA	1 305 572	8 264 369	25 484 148	41 865 076



PROTECTED AGRICULTURAL AREAS (CULTIVATION & GRAZING) IN SOUTH AFRICA



AGRICULTURAL AREAS IN SOUTH AFRICA

Agro-ecosystem **applied** in relation to —

(b) **“identification of agricultural areas”**

- spatially delineate agricultural areas according to shared characteristics in agricultural land capability; suitability; potential; use; location or any combination thereof”

(a) & (b) applicable to:

- evaluation of application (listed activity) + agro-ecosystem report
- Agricultural Sector plans
- etc.

Demarcated based on agro-ecological principles (potential; capability; suitability; use)	
National Protected Agricultural Area (RF: A - D) / (IRR: A - C) Grazing (A +B)	Defined agricultural land under PDALA
Provincial Protected Agricultural Area (RF: E - F) / (IRR: D) Grazing (C +D)	
Primarily Agriculture (moderate - low agricultural potential with agriculture primary land use)	
Secondary Agriculture (agriculture secondary use; many other non-agricultural land uses)	
Agricultural Constraint Areas (low - no agricultural potential / not suited for agriculture)	
Environmental Protected Areas (National / Provincial / Local gazetted PA under NEMPA)	
Transformed	Not agricultural land under PDALA (Excluded) - (formal excluded data layer)
	Transformed– not excluded (waterbodies; RE; Infrastructure (rural))



AGRO-ECOSYSTEM DELINEATION AND AUTHORIZATION

➤ Agricultural Areas

- NPAA; PPAA
- Primarily Agriculture
- Secondary Agriculture
- Agric constraint areas
- *Other*
 - *EPA (parks and reserves)*
 - *Excluded areas (defined non-agricultural land)*
 - *Permanently transformed areas (waterbodies etc.)*

Agro-ecosystem

classified into

➤ Listed Activities

- Change of land use (Level 1)
 - Agriculture
 - Non-agriculture
- Subdivision (& Undivided shares)
- Long-term lease; Usufruct; Habitatio

Norms & Standards



agriculture

Department:
Agriculture
REPUBLIC OF SOUTH AFRICA



Preservation and Development of Agricultural Act, 39 of 2024

Agro-ecosystems Principles



Sustainable Farming

Efficient & Eco-Friendly Practices



Biodiversity Protection

Conserving Wildlife & Habitats



Crop Rotation & Diversification

Mixing Crops & Rotating Fields



Soil Health Improvement

Enhancing Soil Fertility & Structure



Agroforestry

Integrating Trees with Crops



Water Conservation

Efficient Water Use & Protection

Reduced Chemical Use

Minimizing Pesticides & Fertilizers

Renewable Energy

Solar & Wind Power on Farms



Resilient, Productive, and Sustainable Agroecosystems

Thank You...

