

Foot and Mouth Disease outbreak report

29 May 2026



agriculture

Department:

Agriculture

REPUBLIC OF SOUTH AFRICA

Report compiled by:

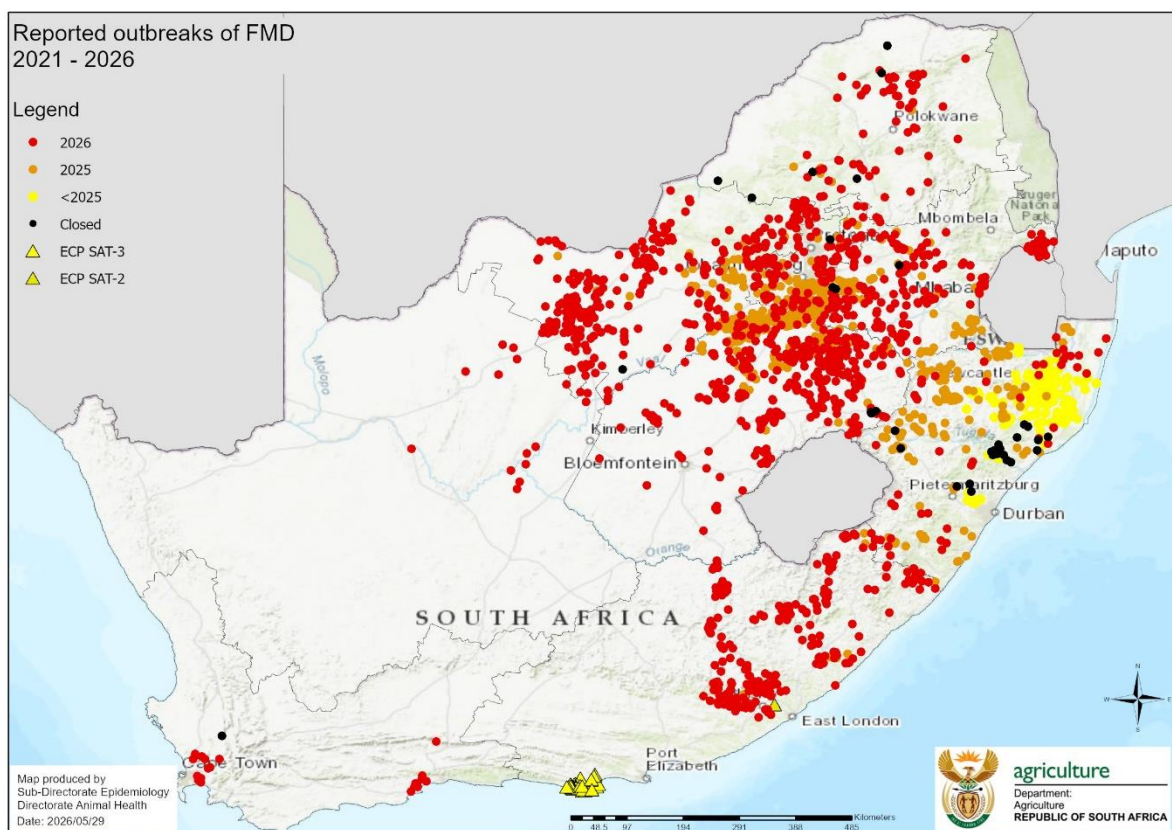
Directorate: Animal Health

The information in this report reflects the status as reported to the World Organisation for Animal Health at the date of this report.

1. Introduction and summary

Foot and Mouth Disease (FMD) is a controlled disease in terms of the Animal Diseases Act, 1984 (Act No. 35 of 1984). South Africa had an internationally recognised FMD free zone without vaccination status, which was suspended in January 2019 following outbreaks in the previous free zone. Since 2019, a number of FMD outbreak events have occurred. Some events have been resolved and closed with the World Organisation for Animal Health (WOAH), while five outbreak events remain open.

South Africa currently has outbreaks of SAT1 and SAT2 occurring in mainly the northern and eastern parts of the country, as can be seen in the map below. The red dots indicate outbreaks that were reported to the WOAH in 2026, the orange dots indicate outbreaks that occurred in 2025, while the yellow markers indicate outbreaks that occurred prior to 2025. The black dots indicate outbreaks that have been resolved and closed with the WOAH.



Map 1: Outbreaks of FMD (unresolved events)

The table below provides a summary of the FMD outbreaks per Province, as reported to the WOAHA at the date of this report. “Open outbreaks” indicate outbreaks that have not yet been resolved and closed with the WOAHA. These may be locations with current active viral circulation, or locations with previous outbreaks that are in the process of being resolved. “Closed outbreaks” have been resolved, quarantine lifted, and the outbreaks were reported as closed to the WOAHA.

Province	Open outbreaks	Closed outbreaks	Total
Eastern Cape	256	0	256
Free State	581	4	585
Gauteng	272	3	275
KwaZulu Natal	316	20	316
Limpopo	76	3	79
Mpumalanga	242	1	243
North West	350	1	351
Northern Cape	15	0	15
Western Cape	22	0	22
Total	2130	32	2162

Table 1: Summary of outbreaks of unresolved events per Province

2. Status of FMD outbreaks per Province

2.1 Eastern Cape Province

2.1.1 FMD outbreaks in 2026

Outbreaks of FMD were reported in all districts of the Eastern Cape Province. Samples were collected and results confirmed outbreaks of FMD on 256 locations, while a number of results are still pending. A SAT1 virus was identified.

2.1.2 2024 SAT3 outbreak event in Humansdorp

Clinical signs of FMD were detected in April 2024 on a farm in Humansdorp in the Eastern Cape Province. Samples tested positive for FMD SAT3. A total of 39 farms were found FMD positive. In addition, a further 36 farms were pre-emptively vaccinated and also placed under

quarantine. The last clinical cases were seen in September 2024. Most of the farms in this outbreak event have been tested after 12 months to confirm their negative status and the event is in the process of being resolved.

2.1.3 2024 SAT2 outbreak event in East London

A serologically positive location was identified in the East London area of the Eastern Cape Province. Cattle on the affected property were vaccinated and remain under quarantine, while the premises is being depopulated through controlled slaughter. The virus on the index farm was identified as a SAT2, similar to the SAT2 virus that caused the 2021 KZN SAT2 event.

2.2 Free State Province

An outbreak of SAT2 FMD was confirmed on a commercial farm in Moqhaka Local Municipality in July 2025. The disease has since also been detected in Lejweleputswa, Fezile Dabi, Xhariep and Thabo Mofutsanyane Districts. A total of 581 outbreaks have been reported to the WOA. A SAT1 virus was also identified.

2.3 Gauteng Province

In April 2025, an outbreak of FMD was detected in the West Rand Municipality of Gauteng. The SAT2 serotype was identified. In October 2025, a SAT 1 strain of FMD virus was also identified in Gauteng Province. Outbreaks were reported in City of Tshwane, Randfontein and Germiston Districts. Currently there is a total of 272 open outbreaks reported to the WOA in Gauteng. Three outbreaks were resolved and closed with the WOA, following depopulation through controlled slaughter.

2.4 KwaZulu Natal Province

There are currently 316 unresolved outbreaks in KZN, affecting all districts in KZN. Outbreaks were initially limited to communal dip tanks and small-scale farms, but have spread to commercial beef and dairy herds. There are also five affected game reserves, all located in close proximity to one another. Complete resolution of this event is unlikely due to the FMD carrier status of the buffalo populations in these affected game reserves. Most of the current open outbreaks in KZN are part of the ongoing SAT2 FMD event in the area that began in May 2021. A SAT1 virus has also been identified.

Twenty outbreaks in KZN have been resolved and closed with the WOAAH. Two feedlots were depopulated through controlled slaughter and closed with the WOAAH in 2021, while one feedlot was depopulated through controlled slaughter in 2025. Quarantine was also lifted on 17 diptanks after negative testing and absence of clinical disease, and consequently closed with the WOAAH.

2.5 Limpopo Province

In early December 2025, clinical signs of FMD were reported from a village in the Vhembe District and tests confirmed FMD. Positive results were confirmed for 76 locations in Vhembe, Waterberg and Capricorn Districts and SAT1 virus was confirmed. Three outbreaks were resolved and closed with the WOAAH in Thabazimbi (Waterberg District), Musina (Vhembe District), and Blouberg (Capricorn District) Local Municipalities respectively.

2.6 Mpumalanga Province

An outbreak of FMD SAT2 was detected in April 2025 in the Gert Sibande Municipality in Mpumalanga Province, which is linked to the outbreaks in KwaZulu Natal Province. A total of 242 confirmed outbreaks have been reported in Mpumalanga Province, also indicating the presence of SAT1 virus. The outbreaks have affected the Gert Sibande and Nkangala Districts. One outbreak in Steve Tshwete local municipality was resolved and closed with the WOAAH.

2.7 North West Province

In June 2025, outbreaks of FMD were reported in North West Province in the JB Marks Local Municipality. A total of 350 open outbreaks have been reported to the WOAAH, in the districts of Bojanala, Ngaka Modiri Molema, Dr Ruth Segomotsi Mompati, and Dr Kenneth Kaunda. The presence of SAT1 and SAT2 viruses were confirmed. One outbreak in Lekwa-Teemane local municipality was resolved and closed with the WOAAH.

2.8 Northern Cape Province

An outbreak of FMD was confirmed in early February 2026 in a feedlot near Kuruman in the Ga-Segonyana Municipality in John Taolo Gaetsewe District in the Northern Cape Province. A total of 15 open outbreaks have been reported to the WOA and a SAT1 virus was identified.

2.9 Western Cape Province

Suspect lesions of FMD were detected on a farm in the Drakenstein Local Municipality in early November 2025. This was as a result of a traceback from another infected property in the Free State Province. Laboratory tests confirmed a SAT 1 virus. A total of 22 outbreaks were reported in Drakenstein Municipality, Mossel Bay Municipality and Swartland Municipality.

3. Epidemiological investigation

The SAT2 FMD event started in KwaZulu Natal Province in May 2021. The same virus was identified in the outbreak event in East London in the Eastern Cape Province, which started in May 2024. In April 2025, the SAT2 virus was also implicated in the spread of the KwaZulu Natal outbreak to Mpumalanga province, and subsequently spread to Gauteng Province in April 2025, North West Province in June 2025 and Free State Province in July 2025.

In February 2025, a SAT1 was identified in the KwaZulu Natal Province. Although the route of introduction is not known, this virus is similar to a virus recently identified in the north of Kruger National Park. No further indications of the presence of this virus has been confirmed in KwaZulu Natal, despite ongoing surveillance.

In October 2025, a SAT1 virus was identified in Gauteng Province, and the same virus was subsequently isolated from outbreaks in the Western Cape Province, the Free State Province, North West Province, Mpumalanga Province, Gauteng Province, KwaZulu Natal Province, Eastern Cape Province and Northern Cape Province. This virus is not similar to the SAT1 virus that was identified in KwaZulu Natal Province.

4 Control measures implemented

The following controlled measures are implemented on infected premises, depending on the situation on the ground:

4.1 Quarantine, biosecurity and movement restrictions

All FMD infected properties are immediately placed under quarantine on suspicion of disease. Movement of live cloven hoofed animals and unprocessed products off the farm are not allowed. Farmers are advised on the implementation of biosecurity on the farms.

If the outbreak is detected in animals that are not fenced in to prevent contact with other animals, where movement control cannot be effectively applied, or where there is not good cooperation with the owners of the animals or the land on which the animals are found, then the declaration of a disease management area (DMA) will be considered. A DMA is an area that is considered as one epidemiological "unit", where premises are potentially epidemiologically linked. All properties in the area will be subjected to the same movement control conditions.

4.2 Vaccination

Vaccination against FMD is strictly government controlled in South Africa and may only be performed by state veterinary services or private veterinarians under supervision of state veterinary services. Vaccination is rolled out in a risk-based manner, with the aim of reaching at least 80% of the national herd.

4.3 Controlled slaughter

In order to expedite the depopulation of affected premises, controlled slaughter can be implemented on a voluntary basis to assist the animal owner to eradicate the disease from his/her land. Animals must be clinically healthy when they go for controlled slaughter and there must be no indication of obvious circulating virus for at least 14 days on the premises. Controlled slaughter includes safe disposal or processing of FMD risk material to ensure that meat is safe and contain no FMD virus. The meat is allowed for sale on the local market, and may only be exported if specifically agreed to by an importing country.

5. Resolution of outbreaks

Outbreaks on individual premises are resolved and closed with the WOA in one of the following manners:

5.1 Depopulation

Depopulation can be achieved either through controlled slaughter, or by removing animals with prior permission of the Director Animal Health to another approved property, such as another property also under quarantine for FMD. Once the affected premises is no longer populated by any FMD susceptible livestock, cleaning and disinfection for the purpose of lifting quarantine can commence. If the premises can be effectively cleaned and disinfected, then application for lifting of quarantine can be made 28 days after cleaning and disinfection.

4.2 Post-12 months testing

Premises like dairy farms, breeding herds and diptank areas, that are not depopulated following an outbreak of FMD, are subjected to rigorous laboratory testing of the remaining cloven-hoofed livestock to confirm cessation of virus circulation more than 12 months after the outbreak. Adult animals present during the outbreak are likely to test serologically positive due to infection and/or vaccination and the sensitivity of agent identification testing is not considered sufficient. Thus, serological surveillance is conducted more than 12 months after an outbreak, with sampling of young animals that were born after presumed cessation of virus circulation and/or vaccination and that, at the time of sampling, are already more than 6 months old to avoid detection of maternal antibodies. If the serological test results duly confirm the absence of FMD virus circulation, quarantine is lifted, but the adult sero-positive animals remain subject to life-long traceability requirements based on individual animal identification.

5. Confirmation of diagnosis

Confirmation of disease is done using a combination of the Solid Phase Competition ELISA (SPCE), Non-Structural Protein (NSP) ELISA, and Polymerase Chain Reaction (PCR). All diagnostic tests are performed at the ARC Onderstepoort Veterinary Research Transboundary Animal Diseases laboratory (OVR-TAD).

6. FMD Control in South Africa

Although the FMD free zone without vaccination status was lost in 2019, the control measures for FMD remain in place as stipulated in the Veterinary Procedural Notice for the Control of FMD in South Africa. The map hereunder illustrates the FMD control zones that remain in place and references in this report to free zone, protection zone and infected zone must be

